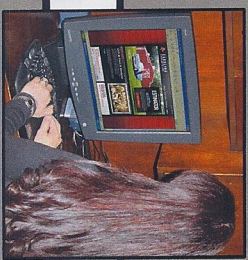




# CAROLINA CARPORTS, INC

## QUALITY, CUSTOMER SERVICE AND BEST PRICES!

FREE PRICING ESTIMATOR ONLINE AT [WWW.CAROLINACARPORTSINC.COM](http://WWW.CAROLINACARPORTSINC.COM)



### FL. CERTIFIED ENCLOSED BUILDINGS 150<sup>MPH</sup> WINDS REGULAR STYLE



**\$3320.00**

26 GA.  
18' x 21' X 8'  
2 1/2" 14 Gauge

### BOXED EAVE STYLE



**\$3555.00**

26 GA.  
18' x 21' X 9'  
2 1/2" 14 Gauge

### VERTICAL ROOF STYLE



**\$3855.00**

26 GA.  
18' x 21' X 9'  
2 1/2" 14 Gauge

**FRAME IS 1FT SHORTER THAN ROOF LENGTH WISE • FREE INSTALLATION ON YOUR LEVEL LAND**

#### INCLUDED IN PRICE:

- MOBILE HOME ANCHORS (ground) or
- CEMENT ANCHORS
- CENTER BRACES
- 26 GAUGE ROOFING



#### LAND / CEMENT MUST BE LEVEL

- CCI recommends cement be 1' shorter than building roof length and 3/4" wider.
- Cement must be level and square corner to corner.
- Return trip fees will be applied if building is not installed.

#### WAIVER POLICY

- CCI strongly recommends all buildings over 36' long to be vertical roof style.
- Customer must sign waiver on regular or boxed eave style longer than 36' due to potential issues at seams.
- CCI not responsible for leaks under base rails.

**CCI Buildings Are "PRODUCT APPROVED" By The State Of Florida.**

PLEASE NOTE THAT COLORS MAY VARY DUE TO PRINTING PROCESS



**ALSO AVAILABLE** → -12 GA. 2 1/4" Framing 20 Year Limited Rust Through Warranty.

-Certified Buildings 180 mph.  
-Certified Buildings 26' - 40' wide.

# PRICES, ACCESSORIES AND EXTRAS

## REGULAR ROOF STYLE

Standard height 8' legs

\$2970.00 12' x 21' \$695 9' Tall	\$3320.00 18' x 21' \$1095 8' Tall	\$4170.00 20' x 21' \$1295 8' Tall	\$5020.00 22' x 21' \$1495 8' Tall	\$5470.00 24' x 21' \$1695 8' Tall
Sides 425	Sides 425	Sides 425	Sides 425	Sides 425
Back 525	Back 650	Back 775	Back 900	Back 1025
Front 525	Front 650	Front 775	Front 900	Front 1025
(1) 9' x 8' 700	(1) 9' x 8' 700	(2) 8' x 8' 1000	(2) 9' x 8' 1400	(2) 9' x 8' 1400
\$3375.00 12' x 26' \$895 8' Tall	\$3835.00 18' x 26' \$1195 8' Tall	\$4585.00 20' x 26' \$1395 8' Tall	\$5535.00 22' x 26' \$1695 8' Tall	\$5985.00 24' x 26' \$1895 8' Tall
Sides 520	Sides 520	Sides 520	Sides 520	Sides 520
Back 525	Back 650	Back 775	Back 900	Back 1025
Front 525	Front 650	Front 775	Front 900	Front 1025
(1) 9' x 8' 700	(1) 9' x 8' 700	(2) 8' x 8' 1000	(2) 9' x 8' 1400	(2) 9' x 8' 1400
\$3810.00 12' x 31' \$1295 8' Tall	\$4160.00 18' x 31' \$1395 8' Tall	\$5010.00 20' x 31' \$1695 8' Tall	\$5960.00 22' x 31' \$1995 8' Tall	\$6510.00 24' x 31' \$2295 8' Tall
Sides 615	Sides 615	Sides 615	Sides 615	Sides 615
Back 525	Back 650	Back 775	Back 900	Back 1025
Front 525	Front 650	Front 775	Front 900	Front 1025
(1) 9' x 8' 700	(1) 9' x 8' 700	(2) 8' x 8' 1000	(2) 9' x 8' 1400	(2) 9' x 8' 1400
\$4125.00 12' x 36' \$1495 8' Tall	\$4475.00 18' x 36' \$1595 8' Tall	\$5425.00 20' x 36' \$1995 8' Tall	\$6375.00 22' x 36' \$2295 8' Tall	\$7025.00 24' x 36' \$2695 8' Tall
Sides 710	Sides 710	Sides 710	Sides 710	Sides 710
Back 525	Back 650	Back 775	Back 900	Back 1025
Front 525	Front 650	Front 775	Front 900	Front 1025
(1) 9' x 8' 700	(1) 9' x 8' 700	(2) 8' x 8' 1000	(2) 9' x 8' 1400	(2) 9' x 8' 1400

LENGTH	21' LONG	26' LONG
12 GA FRAMING	\$ 100.00	\$ 125.00

Garage Doors	6' x 6' .....\$450.00
	8' x 8' .....\$500.00
	9' x 8' .....\$700.00
	10' x 8' .....\$750.00
	10' x 10' .....\$800.00

Walk In Doors	\$175.00 32" x 72"
	\$200.00 36" x 80"

Window	\$150.00 30" x 30"
--------	-----------------------

Garage doors installed on side	Building must be 2' taller than garage door when installed on side, add:
	<b>\$100.00</b> per frame

## BOXED EAVE STYLE

Standard height 9' legs

\$3195.00 12' x 21' \$795 9' Tall	\$3555.00 18' x 21' \$895 9' Tall	\$4415.00 20' x 21' \$1195 9' Tall	\$5275.00 22' x 21' \$1395 9' Tall	\$5735.00 24' x 21' \$1595 9' Tall
Sides 450	Sides 450	Sides 450	Sides 450	Sides 450
Back 550	Back 680	Back 810	Back 940	Back 1070
Front 550	Front 680	Front 810	Front 940	Front 1070
(1) 9' x 8' 700	(1) 9' x 8' 700	(2) 8' x 8' 1000	(2) 9' x 8' 1400	(2) 9' x 8' 1400
\$3630.00 12' x 26' \$1095 9' Tall	\$4090.00 18' x 26' \$1295 9' Tall	\$4850.00 20' x 26' \$1495 9' Tall	\$5810.00 22' x 26' \$1795 9' Tall	\$6270.00 24' x 26' \$1995 9' Tall
Sides 555	Sides 555	Sides 555	Sides 555	Sides 555
Back 550	Back 680	Back 810	Back 940	Back 1070
Front 550	Front 680	Front 810	Front 940	Front 1070
(1) 9' x 8' 700	(1) 9' x 8' 700	(2) 8' x 8' 1000	(2) 9' x 8' 1400	(2) 9' x 8' 1400
\$4080.00 12' x 31' \$1395 9' Tall	\$4540.00 18' x 31' \$1595 9' Tall	\$5300.00 20' x 31' \$1795 9' Tall	\$6260.00 22' x 31' \$2095 9' Tall	\$6820.00 24' x 31' \$2395 9' Tall
Sides 660	Sides 660	Sides 660	Sides 660	Sides 660
Back 550	Back 680	Back 810	Back 940	Back 1070
Front 550	Front 680	Front 810	Front 940	Front 1070
(1) 9' x 8' 700	(1) 9' x 8' 700	(2) 8' x 8' 1000	(2) 9' x 8' 1400	(2) 9' x 8' 1400
\$4415.00 12' x 36' \$1595 9' Tall	\$4875.00 18' x 36' \$1795 9' Tall	\$5735.00 20' x 36' \$2095 9' Tall	\$6795.00 22' x 36' \$2495 9' Tall	\$7355.00 24' x 36' \$2795 9' Tall
Sides 765	Sides 765	Sides 765	Sides 765	Sides 765
Back 550	Back 680	Back 810	Back 940	Back 1070
Front 550	Front 680	Front 810	Front 940	Front 1070
(1) 9' x 8' 700	(1) 9' x 8' 700	(2) 8' x 8' 1000	(2) 9' x 8' 1400	(2) 9' x 8' 1400

31' LONG	\$ 150.00
36' LONG	\$ 175.00
41' LONG	\$ 200.00

## VERTICAL ROOF STYLE

Standard height 9' legs

\$3495.00 12' x 21' \$1095 9' Tall	\$3855.00 18' x 21' \$1195 9' Tall	\$4715.00 20' x 21' \$1495 9' Tall	\$5575.00 22' x 21' \$1695 9' Tall	\$6035.00 24' x 21' \$1895 9' Tall
Sides 450	Sides 450	Sides 450	Sides 450	Sides 450
Back 550	Back 680	Back 810	Back 940	Back 1070
Front 550	Front 680	Front 810	Front 940	Front 1070
(1) 9' x 8' 700	(1) 9' x 8' 700	(2) 8' x 8' 1000	(2) 9' x 8' 1400	(2) 9' x 8' 1400
\$4030.00 12' x 26' \$1495 9' Tall	\$4490.00 18' x 26' \$1695 9' Tall	\$5250.00 20' x 26' \$1895 9' Tall	\$6210.00 22' x 26' \$2195 9' Tall	\$6670.00 24' x 26' \$2395 9' Tall
Sides 555	Sides 555	Sides 555	Sides 555	Sides 555
Back 550	Back 680	Back 810	Back 940	Back 1070
Front 550	Front 680	Front 810	Front 940	Front 1070
(1) 9' x 8' 700	(1) 9' x 8' 700	(2) 8' x 8' 1000	(2) 9' x 8' 1400	(2) 9' x 8' 1400
\$4580.00 12' x 31' \$1895 9' Tall	\$4940.00 18' x 31' \$1995 9' Tall	\$5800.00 20' x 31' \$2295 9' Tall	\$6760.00 22' x 31' \$2595 9' Tall	\$7220.00 24' x 31' \$2795 9' Tall
Sides 660	Sides 660	Sides 660	Sides 660	Sides 660
Back 550	Back 680	Back 810	Back 940	Back 1070
Front 550	Front 680	Front 810	Front 940	Front 1070
(1) 9' x 8' 700	(1) 9' x 8' 700	(2) 8' x 8' 1000	(2) 9' x 8' 1400	(2) 9' x 8' 1400
\$5015.00 12' x 36' \$2195 9' Tall	\$5375.00 18' x 36' \$2295 9' Tall	\$6335.00 20' x 36' \$2695 9' Tall	\$7295.00 22' x 36' \$2995 9' Tall	\$7955.00 24' x 36' \$3395 9' Tall
Sides 765	Sides 765	Sides 765	Sides 765	Sides 765
Back 550	Back 680	Back 810	Back 940	Back 1070
Front 550	Front 680	Front 810	Front 940	Front 1070
(1) 9' x 8' 700	(1) 9' x 8' 700	(2) 8' x 8' 1000	(2) 9' x 8' 1400	(2) 9' x 8' 1400
\$5465.00 12' x 41' \$2495 9' Tall	\$5925.00 18' x 41' \$2695 9' Tall	\$6885.00 20' x 41' \$3095 9' Tall	\$7945.00 22' x 41' \$3495 9' Tall	\$8605.00 24' x 41' \$3895 9' Tall
Sides 870	Sides 870	Sides 870	Sides 870	Sides 870
Back 550	Back 680	Back 810	Back 940	Back 1070
Front 550	Front 680	Front 810	Front 940	Front 1070
(1) 9' x 8' 700	(1) 9' x 8' 700	(2) 8' x 8' 1000	(2) 9' x 8' 1400	(2) 9' x 8' 1400

**TampaSheds.com**  
Location  
Tampa: (813) 626-6289  
Dover: (813) 659-0141  
Mulberry: (863) 425-0429